

Flexo

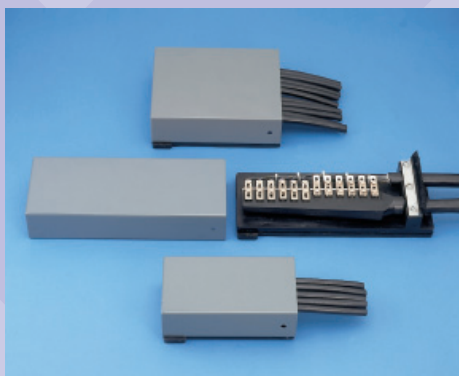
Design



Quality Assurance

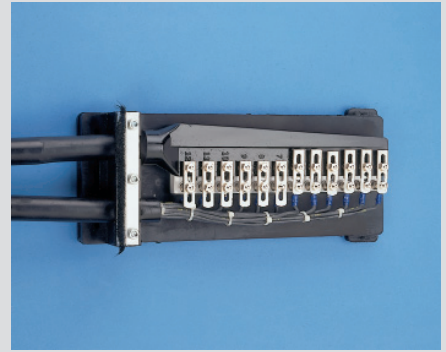
Approvals

Reputation



- > Disconnect boxes are used throughout the railway network to connect signalling equipment to location cabinets.
- > Unique design incorporates a hard neoprene moulded back plate, with sliding steel cover - providing excellent accessibility.
- > With the cover removed, access to the internal terminals is available on all sides.
- > Cover is epoxy coated to resist corrosion and includes the facility for security padlocking.
- > Moulded cable nesting grooves simplifies installation as no traditional glands are required.
- > Securing the cable requires a single Allen key, which contributes to rapid assembly and allows cable routings to be checked quickly and easily.
- > Once the cover is closed, the box is watertight and prohibits water ingress even in flood conditions.
- > The design principals applied ensure that every unit exceeds performance requirements. Specifically, the threaded inserts are fully bonded to the neoprene to ensure integrity and are manufactured from high grade brass to ensure long life. The covers are exceptionally tough and resist corrosion.
- > The neoprene body ensures that vibration degradation is eliminated, ensuring that terminations will not fracture.
- > The Prysmian Disconnect Boxes have over 20 years of trackside installation experience and hold Rail Industry Catalogue numbers.
- > With origins stretching back over 100 years, Prysmian have an enviable reputation for product quality and innovation design.
- > Prysmian Components manufactures and supplies to accredited Business Management Systems BS EN 9001 and 14001 and is certified to OHSAS 18001.

Size / Style	Length	Width	Depth	Typical Application
Small	204	111	70	TP WS 3 Way, AWS, TCAID, Track Circuit
Small Extended	229	111	70	TP WS 6 Way
Medium	204	190	70	Clamplock
Medium Extended	229	190	70	Plug Coupler 4+4
Large	350	130	75	10 Way & 12 Way
Extra Large	350	241	75	Plug Coupler 10+4, 24 Way



Selection Table

Trackside Disconnect Boxes

Prysmian Catalogue Number	RI Catalogue Number	Description
W7 9173 00 01	86/43877	Small disconnect box, track circuit applications, style 11211
W7 9174 00 01	86/43879	Small disconnect box, TCAID-N applications, style 11111
W7 9176 00 01	86/43880	Small disconnect box, AWS applications, style 20002
W7 9179 00 01	-	Small disconnect box, AWS applications, style 20002B, for B2 cable entry
W7 9180 00 01	86/43881	Small disconnect box, TCAID-N applications, style 30011
W7 9181 00 01	86/43886	Small disconnect box, 2 x 4 core cables, style 40004
W7 9183 00 01	86/43887	Small disconnect box, inductor, style 2222
W7 9192 00 01	86/10761	Small disconnect box, TPWS applications, 3 way
W7 9219 00 01	86/10762	Small extended disconnect box, TPWS applications, 6 way
W7 9157 00 01	86/32121	Medium disconnect box, clamplock applications
W7 9158 00 01	-	Medium disconnect box, diode applications
W7 9212 00 01	88/000502	Medium extended disconnect box, point machine coupler, way 4 + 4 way
W7 9189 00 01	86/10753	Large disconnect box, 12 way
W7 9217 0001	-	Large disconnect box, 10 way
W7 9213 00 01	88/000503	Extra large disconnect box, point machine coupler, 10 way + 4 way
W7 9210 0001	86/10755	Extra large disconnect box, 24 way

Trackside Disconnect Box - Accessories

Prysmian Catalogue Number	RI Catalogue Number	Description
W7 4998 00 51	86/10751	Disconnect box mounting stake, standard length for normal ground conditions
W7 4998 00 65	86/88250	Disconnect box mounting stake, long length for poor ground conditions
W7 4998 00 72	86/88260	Disconnect box mounting stake, extra long length for very poor ground conditions
W7 4998 00 53	86/88261	Disconnect box mounting stake, long length for TCAID applications
W7 4998 00 58	86/10754	Post mounting kit for disconnect boxes