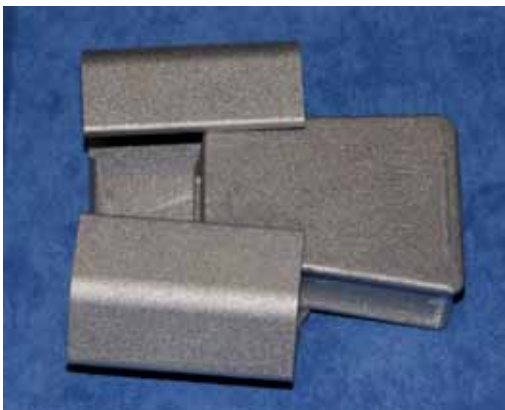


Wedgtap Connectors for Network Rail



WEDGTAP provides a successful and well-proven method of making tap connections onto both aluminium and copper overhead line conductors. Manufactured from high conductivity materials the connector uses an inner wedge that is power driven between the main and tap conductors locking them into a 'C' shaped outer body. A wiping action takes place during installation along the contact faces of the conductors effectively removing surface oxides and supplementing wire brushing. The contact grooves of the WEDGTAP are lined with Bicon 'X1' Inhibitor compound to enhance contact surface integrity.

The WEDGTAP connectors incorporate many features hitherto unavailable in a single design concept.

- Easily assembled onto conductor
- Provides visual indication of correct connector/conductor combination prior to installation.
- Disconnectable
- Maintains full tensile value of conductors
- Range Taking
- Withstands high fault currents
- Can be installed 'Live Line'
- Fully tested to BS3288 Pt1 & ESI 43-92 and meets the Accelerated lifetime Test Procedure (ECRC)

DESCRIPTION

Material

Body Heat-treated aluminium extrusion
 Insert Aluminium die-casting

Weight

Medium (WG-AM) 100 grms
 Large (Wg-AL) 300 grms

TOOLING				CARTRIDGE/BOOSTER			
TYPE		TAKE OFF CLIP		Prysmian		BURNDY	
Prysmian	BURNDY	Prysmian	BURNDY	Install	Remove	Install	Remove
MP100	WTRB	MPA4	WTOCBR	YELLOW	GREEN	BLUE (WG-AM types)	RED
MP200	WTY	MPA1	WTOCY	YELLOW	GREEN	BLUE (WG-AL types)	RED

Cartridge Refs for Prysmian

MP100 & MP200 tools:- Green (WGCG)
 Yellow (WGCY)

Booster Refs for Burndy

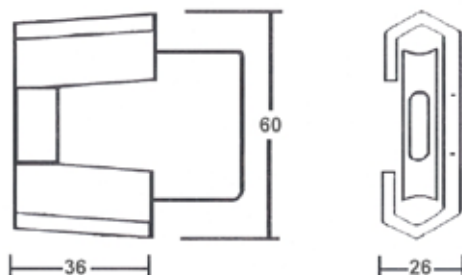
WTRB & WTY tools:- Red (WPBRN)
 Blue (WPBBN)

ALUMINIUM WEDGTAP DETAILS

Tap Conductor (mm)	MAIN CONDUCTOR (mm)			
	19/4.22 AAC	21 Dia Rod	19/3.25 AAC	7/3.95 AWAC
10.5 Dia Rod	WG4ALH* (0091/002270)	WG4ALH* (0091/002270)		WG2AMBR (0091/002279)
7/3.95 AWAC	WG4ALH* (0091/002270)	WG4ALH* (0091/002271)		WG2AMBR (0091/002279)
21 Dia Rod	WG9AL (0091/002271)	WG9AL (0091/002271)	WG7AL (0091/002272)	
19/4.22 AAC	WG9AL (0091/002271)			

*These connectors have individual MAIN and TAP positions

MEDIUM (WG-AM)



LARGE (WG-AL & ALH)

