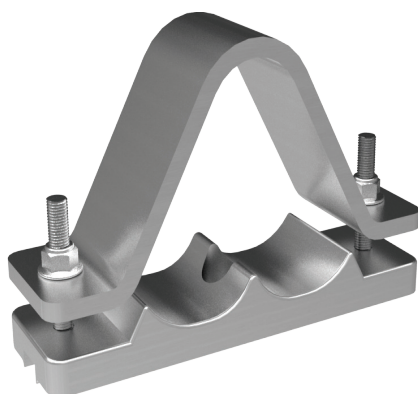


Orion Cleat 376 Series



The orion cleat provides the strongest support for cables laid in trefoil formation. Suitable for LV, MV and HV cable designs, the orion cleat features deep cast bases to aid easy cable installations.

Features and Benefits

- Suitable for use with cable diameters 62-186mm.
- Manufactured from aluminium alloy.
- Suitable for use on LV, MV & HV cable designs.
- Single or two bolt fixing.
- Designed for use with larger diameter single core cables laid in trefoil formation.
- Deep section cast bases aid cable installation.
- Can be supplied with rubber liners.
- Profiled versions are available to meet specific design requirements.
- Tested in accordance with EN 50368:2003.

Performance Data

| BS EN 61914 | Clause | Classification |
|-----------------------|--------|-------------------|
| Type | 6.1.1 | Composite |
| Operating Temperature | 6.2 | -40 °C to +105 °C |
| Impact Resistance | 6.3 | Heavy |
| Needle Flame | 10.1 | >120secs |

| BS EN 61914 | Clause | Classification |
|-----------------------------|---|--|
| Resistance to Short Circuit | 6.4.4 (2 short circuit) (HV Cable used) | 31kA rms, 80kA peak |
| Corrosion | 6.5.2 | High, Outdoor - wet conditions (coating required for marine locations) |

* Technical Information subject to change without notice

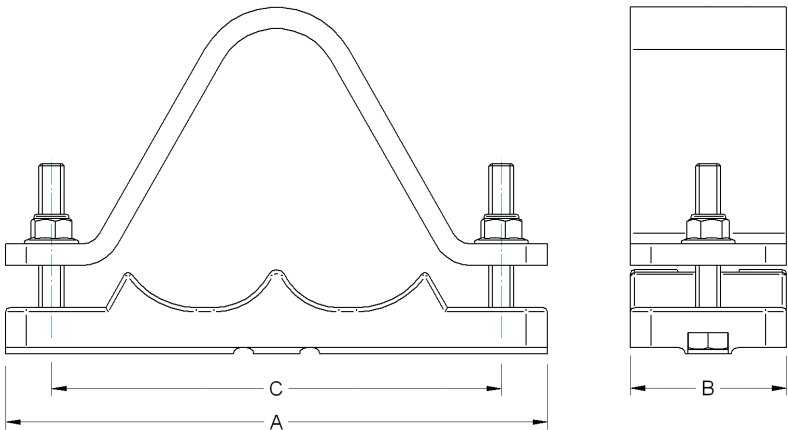


Technical Data

| Cable and Cleat Selection | | | | Cleat Details | | | | |
|---------------------------|--------------|----------------|-----|-----------------|-----|-----|-------------|-------------|
| Design Number | | Cable Diameter | | Dimensions (mm) | | | Fixing Size | Weight (kg) |
| Standard | Epoxy coated | (mm) | | A | C | B | | |
| | | Min | Max | | | | | |
| 376TR06 | 376TE06 | 62 | 75 | 260 | 216 | 80 | M12 | 2.484 |
| 376TR07 | 376TE07 | 75 | 90 | 295 | 251 | 80 | M12 | 3.326 |
| 376TR08 | 376TE08 | 90 | 107 | 340 | 296 | 100 | M12 | 4.168 |
| 376TR09 | 376TE09 | 107 | 129 | 390 | 346 | 100 | M12 | 4.951 |
| 376TR10 | 376TE10 | 129 | 155 | 450 | 406 | 125 | M12 | 9.500 |
| 376TR11 | 376TE11 | 155 | 186 | 525 | 481 | 150 | M12 | 11.536 |

Note 1: All cleats have the facility for single or two bolt fixing for M12 bolt. If 2 bolt fixings are used a minimum grade of 8.8 must be selected

Note 2: 376TR11 and 376TE11 have four fixing bolts. Dimension C as above with 70mm between the bolts.



Prysmian Cables & Systems Limited,
Oak Road, Wrexham Industrial Estate, Wrexham, LL13 9PH, UK

Commercial Enquiries,
Sales Office Tel: 0845 767 8345,
International Sales Office Tel: +44 2380 295481

www.biconcomponents.co.uk