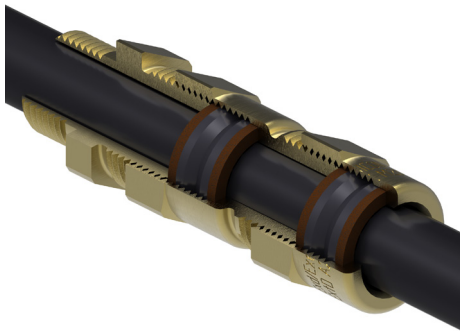


A2EXP Ex d IIC / Ex e II

KM495 Series



The A2EX is a cable gland that provides high performance in high temperatures in deluge and IP68



Features and benefits:

- Brass indoor and outdoor cable gland for use in hazardous areas
- Suitable for circular unarmoured cables with extruded oversheath
- Fitted with silicone rubber low smoke, zero halogen seal
- Achieves IP66, IP68 (1 bar) and deluge proof (DTS01:1991) seal onto cable and to enclosure with suitable sealing washer or thread sealant
- Suitable for most climatic conditions – weatherproof, waterproof and deluge proof
- Standard and Nickel plated versions available
- Full Installation Instructions supplied

Kit comprises:

A2EX Gland
Brass Locknut
Nylon Sealing Washer
PVC Shroud
(2 per kit up to and including 25mm size)



Technical Information:

Certified II 2GD, Ex e II & Ex d IIC under ATEX directive 94/9/EC

Atex Compliance Standards: EN 60079-0, EN 60079-1, EN 60079-7, EN 61241-0, EN 61241-1

Certificate number Sira99ATEX1086X

IECEx Compliance Standards: IEC 60079-0, IEC 60079-1, IEC 60079-7, IEC 61241-0, IEC 61241-1

Certificate number IECEx SIR 10.0069X

Service temperature range -50°C to +200°C

UL Classified in accordance with IEC 60079-0, 60079-1 and 60079-7 for use in hazardous locations

UL Listed for use in Class 1, Zone 0, 1 and 2 hazardous locations for Canada

May be used in:

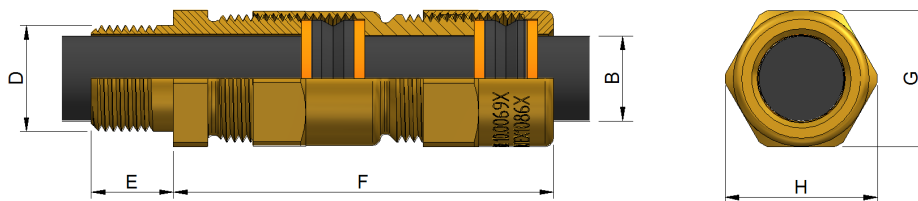
- Zones 0, 1 & 2 with Ex ia IIA, B & C equipment
- Zones 1 & 2 with Ex ib IIA, B & C equipment
- Zones 1 & 2 with Ex e II equipment
- Zones 1 & 2 with Ex p II equipment
- Zone 2 with Ex nA II equipment
- Zones 21 & 22 with Ex tD II equipment

Where the cable is effectively filled, may also be used in:

- Zones 1 & 2 with Ex d IIC equipment not containing a source of ignition & with a volume less than 2000 cm³
- Zones 1 & 2 with Ex d IIA & Ex d IIB equipment not containing a source of ignition & with any volume
- Zone 1 with Ex d IIA & Ex d IIB equipment containing a source of ignition & with a volume less than 2000 cm³
- Zone 2 with Ex d IIA & Ex d IIB equipment containing a source of ignition & with any volume
- Zone 2 with Ex nR II equipment

Specifications

| Gland Kit Reference | | Cable Dimensions mm | | | | | Gland Dimensions mm | | | |
|---------------------|---------------|---------------------|-------------|----------------------|------|------------------|---------------------|-----------------------|---------|---------|
| Design Reference | | Size | Qty per Kit | Cable Diameter ø (B) | | Entry Thread (D) | Thread Length (E) | Protrusion Length (F) | Hexagon | |
| Standard | Nickel Plated | | | Min | Max | | | | A/F (G) | A/C (H) |
| KM495-51 | KM495-51V | 16 | 2 | 3.5 | 8.5 | M16x1.5 | 15 | 65 | 22 | 24.9 |
| KM495-71 | KM495-71V | 20SS | 2 | 3.5 | 8.5 | M20x1.5 | 15 | 65 | 22 | 24.9 |
| KM495-52 | KM495-52V | 20S | 2 | 8.0 | 11.5 | M20x1.5 | 15 | 62 | 22 | 24.9 |
| KM495-53 | KM495-53V | 20 | 2 | 8.0 | 16.0 | M20x1.5 | 15 | 81 | 25.7 | 28.7 |
| KM495-55 | KM495-55V | 25 | 2 | 11.5 | 21.0 | M25x1.5 | 15 | 85 | 33 | 36.9 |
| KM495-56 | KM495-56V | 32 | 1 | 18.5 | 27.5 | M32x1.5 | 15 | 69 | 37.5 | 42.2 |
| KM495-57 | KM495-57V | 40 | 1 | 24.0 | 34.0 | M40x1.5 | 15 | 82 | 47.2 | 53.6 |
| KM495-59 | KM495-59V | 50 | 1 | 31.0 | 41.0 | M50x1.5 | 15 | 79 | 56.4 | 61.5 |
| KM495-61 | KM495-61V | 63 | 1 | 40.0 | 52.5 | M63x1.5 | 15 | 113.5 | 70 | 77.2 |
| KM495-62 | KM495-62V | 75S | 1 | 52.5 | 58.0 | M75x1.5 | 15 | 78.5 | 80 | 87.4 |
| KM495-63 | KM495-63V | 75 | 1 | 54.5 | 65.5 | M75x1.5 | 15 | 120 | 80 | 87.4 |



Prysmian Cables & Systems Limited,
Oak Road, Wrexham Industrial Estate, Wrexham, LL13 9PH, UK

Commercial Enquiries,
Sales Office Tel: 0845 767 8345,
International Sales Office Tel: +44 2380 295481

www.biconcomponents.co.uk

**Prysmian
Draka
General Cable**