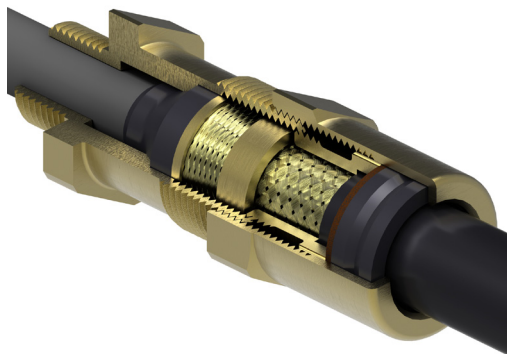


Excel Plus Ex d IIC / Ex e II

KA493 SERIES



The Excel plus is a universal hazardous area gland achieves IP67 and deluge protection with additional features for soft-bedding materials subject to cold flow.

Features and benefits:

- Brass indoor and outdoor cable gland for use in hazardous areas
- Suitable for circular cables with braid, tape or wire armour and extruded polymeric bedding & oversheath
- Achieves IP67 and deluge proof (DTS01:1991) seal onto cable and to enclosure with sealing washer supplied or thread sealant
- Three part armour lock provides mechanical cable retention and electrical continuity
- Diaphragm inner seal compatible with soft bedding materials that may be subject to 'cold-flow'
- Suitable for most climatic conditions – weatherproof, waterproof and deluge proof
- Nickel plated versions also available

Kit comprises

Excel Plus Gland
Brass Earth Tag
Brass Locknut
Nylon Sealing Washer
PVC Shroud

(2 per kit up to and including 25mm size)



Technical Information:

Certified II 2GD, Ex e II & Ex d IIC under ATEX directive 94/9/EC

Atex Compliance Standards: EN 60079-0, EN 60079-1,

EN 60079-7, EN 61241-0, EN 61241-1

Certificate number Sira01ATEX1032X

Service temperature range -20°C to +90°C

CSA certified Ex d IIC & Ex e II, CSA Enclosure Type 4X,

AEx d IIC & AEx e II, NEMA 4X

May be used in:

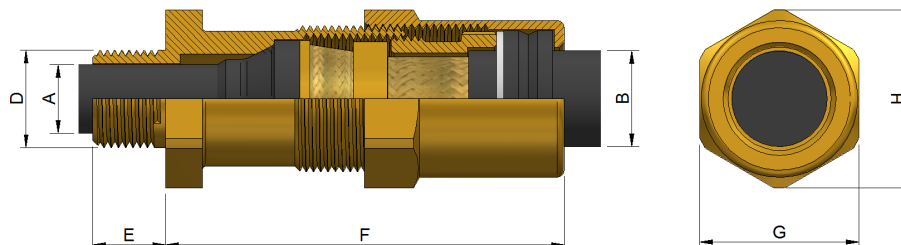
- Zones 0, 1 & 2 with Ex ia IIA, B & C equipment
- Zones 1 & 2 with Ex ib IIA, B & C equipment
- Zones 1 & 2 with Ex e II equipment
- Zones 1 & 2 with Ex p II equipment
- Zone 2 with Ex nA II equipment
- Zones 21 & 22 with Ex tD II equipment

Where the cable is effectively filled, may Also be used in:

- Zones 1 & 2 with Ex d IIC equipment not containing a source of ignition & with a volume less than 2000 cm³
- Zones 1 & 2 with Ex d IIA & Ex d IIB equipment not containing a source of ignition & with any volume
- Zone 1 with Ex d IIA & Ex d IIB equipment containing a source of ignition & with a volume less than 2000 cm³
- Zone 2 with Ex d IIA & Ex d IIB equipment containing a source of ignition & with any volume
- Zone 2 with Ex nR II equipment

Specifications

Gland Kit Reference			Cable Dimensions mm						Gland Dimensions mm				
Design Reference		Size	Qty Per Kit	Under Armour		Overall Ø		Max Armour Entry Thread Thickness	Thread (D)	Thread Length (E)	Protrusion Length (F)	Hexagon	
Standard	Nickel Plated			Min	Max	Min	Max					A/F (G)	A/C (H)
KA493-51	KA493-51V	16	2	4	9	8	16	1.25	M16 × 1.5	15	73	25.7	28.7
KA493-71	KA493-71V	20SS	2	4	9	8	16	1.25	M20 × 1.5	15	73	25.7	28.7
KA493-52	KA493-52V	20S	2	7	12	9	16	1.25	M20 × 1.5	15	68	27.8	31.8
KA493-53	KA493-53V	20	2	8	14.4	11.5	21	1.25	M20 × 1.5	15	76	33	36.9
KA493-55	KA493-55V	25	2	10.5	20.2	18.5	27.5	1.6	M25 × 1.5	15	76	37.6	42.2
KA493-56	KA493-56V	32	1	15.5	26.5	21	34	2	M32 × 1.5	15	86	47.2	53.6
KA493-57	KA493-57V	40	1	23	32.5	31	41.5	2	M40 × 1.5	15	90	56.4	61.5
KA493-59	KA493-59V	50	1	28.5	44.5	36	52.5	2.5	M50 × 1.5	15	111	70	77.2
KA493-61	KA493-61V	63	1	44	56.5	50	65.5	2.5	M63 × 1.5	15	112	80	87.4
KA493-63	KA493-63V	75	1	53	68.5	59	78	2.5	M75 × 1.5	15	130	98.8	109.2



Prysmian Cables & Systems Limited,
Oak Road, Wrexham Industrial Estate, Wrexham, LL13 9PH, UK

Commercial Enquiries,
Sales Office Tel: 0845 767 8345,
International Sales Office Tel: +44 2380 295481

www.biconcomponents.co.uk

**Prysmian
Draka
General Cable**