

# Low Voltage Industrial Cable Joint

(Includes Compression Connectors)

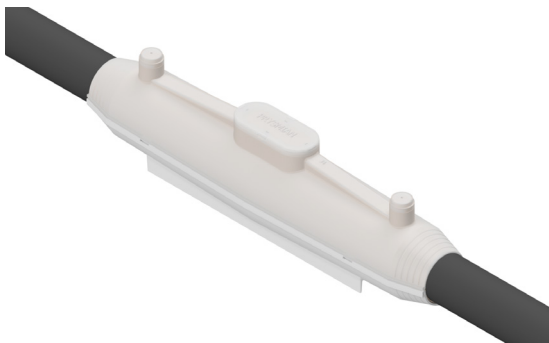
## JUJCC



Low Voltage Industrial Straight Joints- 600-1000V - Including compression Connectors. Suitable for use with SWA cables to BS5467, BS6346 and IEC502 with polymeric insulation and copper conductors from 1.5mm<sup>2</sup> to 400mm<sup>2</sup>.

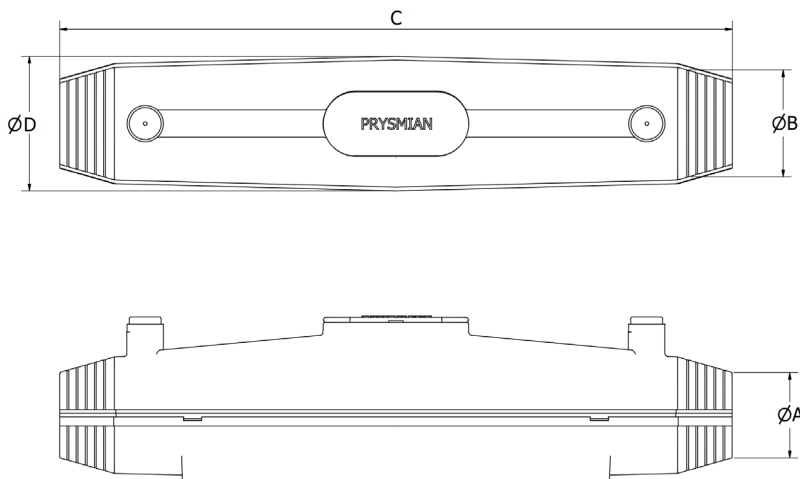
### Features and benefits

- Tested and approved to BS EN 50393 and ENATS TS C81/3.
- Includes a constant force spring armour bond.
- Utilizes Prysmian's Low hazard isocyanate free JEM resin.
- Utilizes Compact joints shells which minimizes the joint footprint.
- Supplied with compression connectors.



Nominal Conductor Cross Section (mm <sup>2</sup> )	Joint Selection		
	Two Core	Three Core	Four Core
1.5	JUJ2CC	JUJ2CC	JUJ2CC
2.5	JUJ2CC	JUJ2CC	JUJ2CC
4	JUJ2CC	JUJ2CC	JUJ2CC
6	JUJ6CC	JUJ6CC	JUJ6CC
10	JUJ10CC	JUJ10CC	JUJ10CC
16	JUJ16CC	JUJ16CC	JUJ16CC
25	JUJ25CC	JUJ25CC	JUJ25CC
35	JUJ35CC	JUJ35CC	JUJ35CC
50	JUJ50CC	JUJ50CC	JUJ50CC
70	JUJ70CC	JUJ70CC	JUJ70CC
95	JUJ95CC	JUJ95CC	JUJ95CC
120	JUJ120CC	JUJ120CC	JUJ120CC
150	JUJ150CC	JUJ150CC	JUJ150CC
185	JUJ185CC	JUJ185CC	JUJ185CC
240	JUJ240CC	JUJ240CC	JUJ240CC
300	JUJ300CC	JUJ300CC	JUJ300CC
400*	JUJ400CC	JUJ400CC	JUJ400CC

\*Does not accommodate cross core (phase to phase) jointing



Joint Ref	Shell Dimensions (mm)			
	Min Box Entry ØA	Max Box Entry ØB	Box Length C	Internal ØD
JUJ2CC	12	26	185	32
JUJ6CC/JUJ10CC	14	32	245	43
JUJ16CC	23	39	325	44
JUJ25CC/ JUJ35CC	28	50	375	65
JUJ50CC/ JUJ70CC/ JUJ95CC	32	58	520	99
JUJ120CC/ JUJ150CC/ JUJ185CC	45	75	705	124
JUJ240CC/ JUJ300CC	40	89	862	140
JUJ400CC	57	95	900	154

**Prysmian Cables & Systems Limited,**  
Oak Road, Wrexham Industrial Estate, Wrexham, LL13 9PH, UK

**Commercial Enquiries,**  
Sales Office Tel: 0845 767 8345,  
International Sales Office Tel: +44 2380 295481

[www.biconcomponents.co.uk](http://www.biconcomponents.co.uk)