

Altus Cleat (Aluminium)

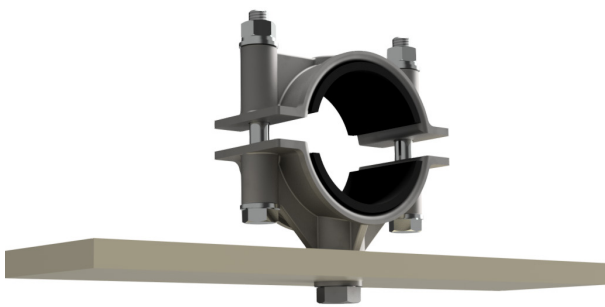
370 Series



The Altus range - flexibility by design!

Features and benefits

- Suitable for use with cable diameters 50 to 152mm.
- Manufactured from aluminium alloy.
- Two-piece cleat design.
- Single M16 thread be used to attach directly to cable ladder, tray or structure.
- Can be used in an extended assembly.
- » Can be used with optional fixed or swivel bases.
- Suitable for Low, Medium and High Voltage cables.
- Can be used for all types of cable routes.
- Cleat supplied with 5mm rubber liner as standard.
- Tested in accordance with IEC 61914:2015.



Performance Data

	Clause	Classification
Type	6.1.3	Composite
Operating Temperature	6.2	-60°C to 105°C
Impact Resistance	6.3.4	Heavy
Lateral Load	6.4.2	Orientation 2a: 12.6kN - 15.8kN Orientation 2c: 7.2kN - 8.2kN

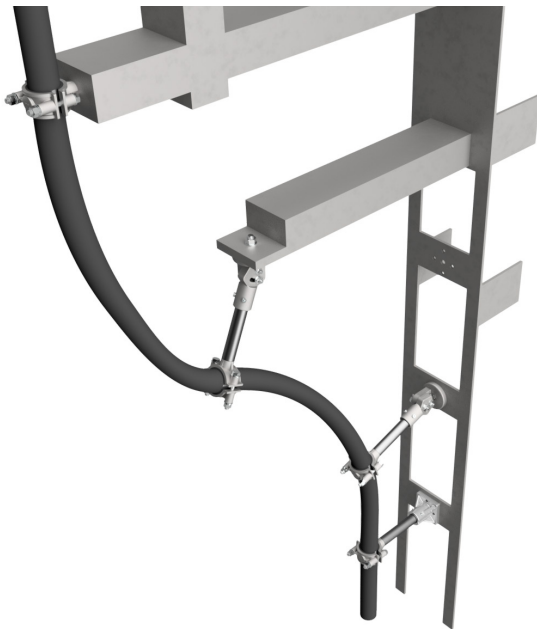
* Technical Information subject to change without notice

	Clause	Classification
Axial Load	6.4.3	1kN - 3.5kN
Resistance to More Than One Short Circuit	6.4.5	42.4 RMS, 100kA Peak, Ø=74.4, spacing = 2000mm
Resistance to UV	6.5.1	Resistant to ultraviolet light
Resistance to Corrosion	6.5.2	High, Outdoor - wet conditions

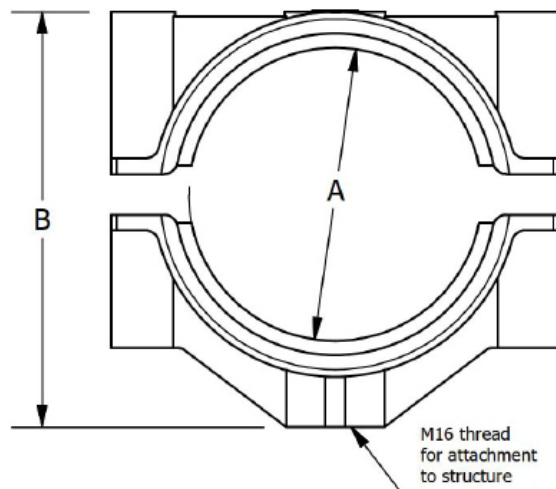
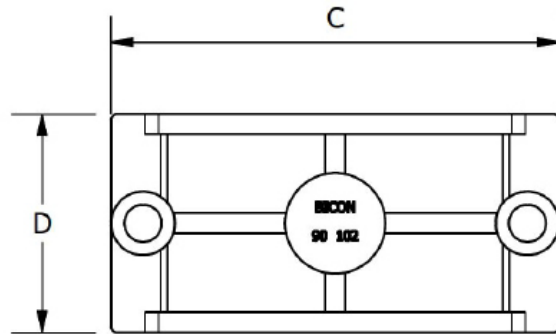
Technical Data

Cable and Cleat Selection			Cleat Details			
Design Number	Cable Diameter		Dimensions (mm)			Weight (g)
	A (mm)		B (max)	C	D	
	Min	Max				
370FA10	50	62	104	104	50	529
370FA11	60	72	114	136	54	712
370FA12	70	82	116	140	64	835
370FA13	80	92	134.5	152	76	1043
370FA14	90	102	144.5	156	76	1096
370FA15	100	112	154.5	175	100	1431
370FA16	110	122	165.5	178	100	1622
370FA17	120	132	175.5	200	120	1963
370FA18	130	142	185.5	206	120	2099
370FA19	140	152	196	215	150	2540

* All fixings Bright Zinc Plated (BZP)



A Typical Installation



Prysmian Cables & Systems Limited,
Oak Road, Wrexham Industrial Estate, Wrexham, LL13 9PH, UK

Commercial Enquiries,
Sales Office Tel: 0845 767 8345,
International Sales Office Tel: +44 2380 295481

www.biconcomponents.co.uk

**Prysmian
Draka
General Cable**