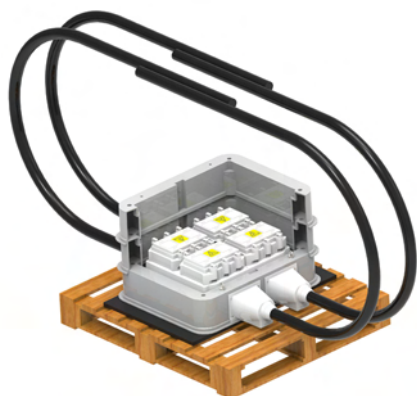


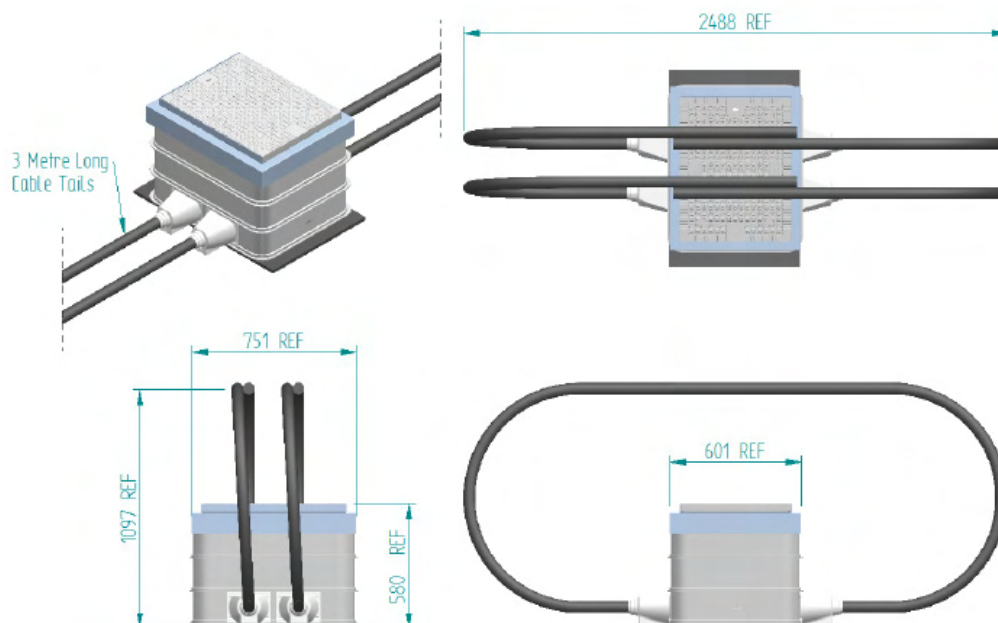
Low Voltage 4 Way Underground Tailed Link Disconnecting Box 924T3 Series



Prysmian's 924T3 series low voltage 4 way underground tailed link disconnecting boxes are used to connect or isolate underground low voltage cable networks.

Features and benefits:

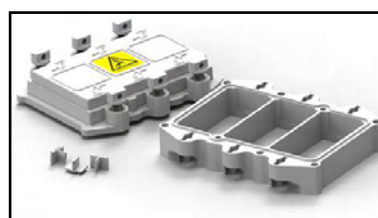
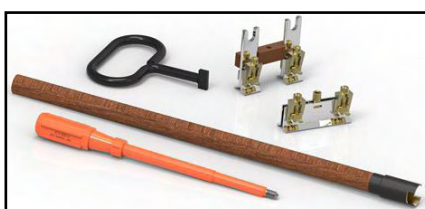
- Supplied Pre-Tailed with 3 Metres or 3 core 300mm² waveform cable attached to each cable port
- Easy Installation
- No heavy bell lid, making access easier
- Supplied with four individual link chamber covers for safer operation
- Repairable link chambers
- Chamber height/volume can be increased with additional chamber walls
- Supplied with or without a full set of solid links in a storage box
- All internal connectors tested to BS EN 61238-1:2003
- Link Box meets and exceeds ENA TS 09-23: 2014 for solid links and fuses
- Short circuit tested to 28.3kA for 1 second to meet the requirements of 300mm² waveform cable as per BS7870 – 3.40 : 2001



Product Codes

924T3 Series Link Box		
Part Number	Description	Weight(Kg)
92401T30L	4-Way 3 Core Tailed Link Box	222

Tooling and Spares		
Part Number	Description	Weight (Kg)
8201000	Contact Post Extender (Fusemate)	0.55
82200009	Light Weight Pavement Cover Lift Key (1 off)	0.18
88010002	Insulated Wedge Type Link Removal Tool	0.26
88010003	Solid Wedge Type Link	0.45
88010190	Fuse Tightening Tool	0.16
8213001	Link Box Earthing Kit (Single Side)	2.00
8215001	Replacement Chamber Wall Assembly	0.80
8216001	Extension Chamber Wall Kit	0.86
8217001	Replacement Lid Assembly	0.80
8218001	Replacement Toggle Kit	0.10
8220010	Complete Insulated Toolkit	7.00



Prysmian Cables & Systems Limited,
Oak Road, Wrexham Industrial Estate, Wrexham, LL13 9PH, UK

Commercial Enquiries,
Sales Office Tel: 0845 767 8345,
International Sales Office Tel: +44 2380 295481

www.biconcomponents.co.uk