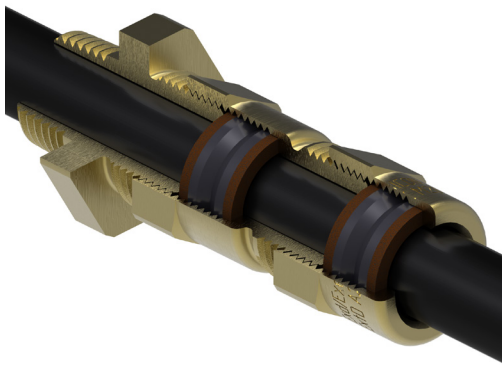


# A2EXP (NPT) Ex d IIC / Ex e II

## 495NE Series



The A2EX is a cable gland that provides high performance in high temperatures in deluge and IP68 conditions.



### Features and benefits:

- Brass indoor and outdoor cable gland for use in hazardous areas
- Suitable for circular unarmoured cables with extruded oversheath
- Fitted with silicone rubber low smoke, zero halogen seal
- Achieves IP66, IP68 (1 bar) and deluge proof (DTS01:1991) seal onto cable and to enclosure with suitable sealing washer or thread sealant
- Suitable for most climatic conditions – weatherproof, waterproof and deluge proof
- Standard and Nickel plated versions available
- Full Installation Instructions supplied



## Technical Information:

Certified II 2GD, Ex e II & Ex d IIC under ATEX directive 94/9/EC  
 Atex Compliance Standards: EN 60079-0, EN 60079-1, EN 60079-7, EN 61241-0, EN 61241-1  
 Certificate number Sira99ATEX1086X  
 IECEx Compliance Standards: IEC 60079-0, IEC 60079-1, IEC 60079-7, IEC 61241-0, IEC 61241-1  
 Certificate number IECEx SIR 10.0069X  
 Service temperature range -50°C to +200°C

UL Classified in accordance with IEC 60079-0, 60079-1 and 60079-7 for use in hazardous locations  
 UL Listed for use in Class 1, Zone 0, 1 and 2 hazardous locations for Canada

### May be used in:

- Zones 0, 1 & 2 with Ex ia IIA, B & C equipment
- Zones 1 & 2 with Ex ib IIA, B & C equipment
- Zones 1 & 2 with Ex e II equipment
- Zones 1 & 2 with Ex p II equipment
- Zone 2 with Ex nA II equipment
- Zones 21 & 22 with Ex tD II equipment

### Where the cable is effectively filled, may also be used in:

- Zones 1 & 2 with Ex d IIC equipment not containing a source of ignition & with a volume less than 2000 cm<sup>3</sup>
- Zones 1 & 2 with Ex d IIA & Ex d IIB equipment not containing a source of ignition & with any volume
- Zone 1 with Ex d IIA & Ex d IIB equipment containing a source of ignition & with a volume less than 2000 cm<sup>3</sup>
- Zone 2 with Ex d IIA & Ex d IIB equipment containing a source of ignition & with any volume
- Zone 2 with Ex nR II equipment

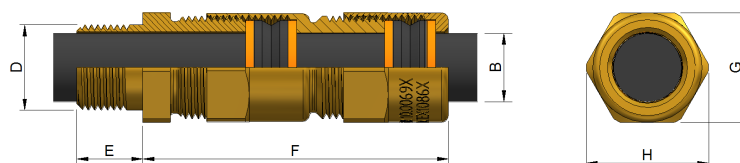
## Specifications

Gland Kit Reference		Cable Dimensions mm				Gland Dimensions mm			
Design Reference		Size	Cable Diameter $\phi$ (B) mm		Entry Thread (D)	Thread Length (E)	Protrusion Length (F)	Hexagon	
Standard	Nickel Plated		Min	Max				A/F (G)	A/C (H)
495NE-03	495NE-03V	1/2" - 16	3.5	8.5	1/2" NPT	15.5	65	25.7	28.7
495NE-04	495NE-04V	1/2" - 20S	8.0	11.5	1/2" NPT	15.5	65	27.8	31.8
495NE-05	495NE-05V	1/2" - 20	8.0	16.0	1/2" NPT	15.5	62	33	36.9
495NE-08	495NE-08V	3/4" - 20	8.0	16.0	3/4" NPT	16.4	62	33	36.9
495NE-10	495NE-10V	3/4" - 25	11.5	21.0	3/4" NPT	16.4	81	33	36.9
495NE-14	495NE-14V	1" - 25	11.5	21.0	1" NPT	19.5	81	37.5	42.2
495NE-15	495NE-15V	1" - 32	18.5	27.5	1" NPT	19.5	69	37.5	42.2
495NE-20	495NE-20V	1 1/4" - 32	18.5	27.5	1 1/4" NPT	20.5	69	47.2	52.9
495NE-21	495NE-21V	1 1/4" - 40	24.0	34.0	1 1/4" NPT	20.5	82	47.2	53.6
495NE-27	495NE-27V	1 1/2" - 40	24.0	34.0	1 1/2" NPT	21	82	56.4	63.1
495NE-32	495NE-32V	2" - 50	31.0	41.0	2" NPT	22	79	65	71.5
495NE-38	495NE-38V	2 1/2" - 63	40.0	52.5	2 1/2" NPT	32.5	113.5	80	87.4
495NE-44	495NE-44V	3" - 75S	52.5	58.0	3" NPT	33.5	78.5	98.8	109.2
495NE-45	495NE-45V	3" - 75	54.5	65.5	3" NPT	33.5	120	98.8	109.2

Sizes 75s and 75 shall only be used for fixed installations.  
 In addition the user / installer should ensure that the cables are adequately clamped.

\*NPT Threaded glands are supplied as glands only.

\*\*Other NPT sizes available upon request.



**Prysmian Cables & Systems Limited,**  
 Oak Road, Wrexham Industrial Estate, Wrexham, LL13 9PH, UK

**Commercial Enquiries,**  
 Sales Office Tel: 0845 767 8345,  
 International Sales Office Tel: +44 2380 295481

[www.biconcomponents.co.uk](http://www.biconcomponents.co.uk)

**Prysmian  
 Draka  
 General Cable**