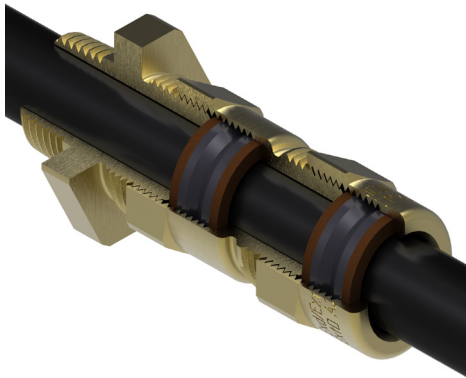


A2EXP Ex d IIC / Ex e II

495AB Series



The A2EXP is a cable gland that provides high performance in high temperatures in deluge and IP68 conditions.



Features and benefits:

- Brass indoor and outdoor cable gland for use in hazardous areas
- Suitable for circular unarmoured cables with extruded oversheath
- Fitted with silicone rubber low smoke, zero halogen seal
- Achieves IP66, IP68 (1 bar) and deluge proof (DTS01:1991) seal onto cable and to enclosure with suitable sealing washer or thread sealant
- Suitable for most climatic conditions – weatherproof, waterproof and deluge proof
- Standard and Nickel plated versions available
- Full Installation Instructions supplied



Technical Information:

Certified II 2GD, Ex e II & Ex d IIC under ATEX directive 94/9/EC
 Atex Compliance Standards: EN 60079-0, EN 60079-1, EN 60079-7, EN 61241-0, EN 61241-1
 Certificate number Sira99ATEX1086X
 IECEx Compliance Standards: IEC 60079-0, IEC 60079-1, IEC 60079-7, IEC 61241-0, IEC 61241-1
 Certificate number IECEx SIR 10.0069X
 Service temperature range -50°C to +200°C

UL Classified in accordance with IEC 60079-0, 60079-1 and 60079-7 for use in hazardous locations
 UL Listed for use in Class 1, Zone 0, 1 and 2 hazardous locations for Canada

May be used in:

- Zones 0, 1 & 2 with Ex ia IIA, B & C equipment
- Zones 1 & 2 with Ex ib IIA, B & C equipment
- Zones 1 & 2 with Ex e II equipment
- Zones 1 & 2 with Ex p II equipment
- Zone 2 with Ex nA II equipment
- Zones 21 & 22 with Ex tD II equipment

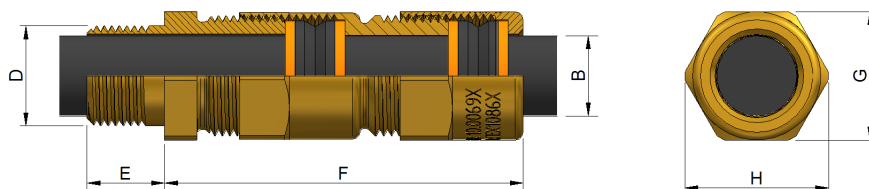
Where the cable is effectively filled, may also be used in:

- Zones 1 & 2 with Ex d IIC equipment not containing a source of ignition & with a volume less than 2000 cm³
- Zones 1 & 2 with Ex d IIA & Ex d IIB equipment not containing a source of ignition & with any volume
- Zone 1 with Ex d IIA & Ex d IIB equipment containing a source of ignition & with a volume less than 2000 cm³
- Zone 2 with Ex d IIA & Ex d IIB equipment containing a source of ignition & with any volume
- Zone 2 with Ex nR II equipment

Specifications

Gland Kit Reference		Cable Dimensions mm				Gland Dimensions mm			
Design Reference		Size	Cable Diameter ϕ (B) mm		Entry Thread (D)	Thread Length (E)	Protrusion Length (F)	Hexagon	
Standard	Nickel Plated		Min	Max				A/F (G)	A/C (H)
495AB-51	495AB-51V	16	3.5	8.5	M16x1.5	15	65	22	24.9
495AB-71	495AB-71V	20SS	3.5	8.5	M20x1.5	15	65	22	24.9
495AB-52	495AB-52V	20S	8.0	11.5	M20x1.5	15	62	22	24.9
495AB-53	495AB-53V	20	8.0	16.0	M20x1.5	15	81	25.7	28.7
495AB-55	495AB-55V	25	11.5	21.0	M25x1.5	15	85	33	36.9
495AB-56	495AB-56V	32	18.5	27.5	M32x1.5	15	69	37.5	42.2
495AB-57	495AB-57V	40	24.0	34.0	M40x1.5	15	82	47.2	53.6
495AB-59	495AB-59V	50	31.0	41.0	M50x1.5	15	79	56.4	61.5
495AB-61	495AB-61V	63	40.0	52.5	M63x1.5	15	113.5	70	77.2
495AB-62	495AB-62V	75S	52.5	58.0	M75x1.5	15	78.5	80	87.4
495AB-63	495AB-63V	75	54.5	65.5	M75x1.5	15	120	80	87.4

Sizes 75s and 75 shall only be used for fixed installations.
 In addition the user / installer should ensure that the cables are adequately clamped.



Prysmian Cables & Systems Limited,
 Oak Road, Wrexham Industrial Estate, Wrexham, LL13 9PH, UK

Commercial Enquiries,
 Sales Office Tel: 0845 767 8345,
 International Sales Office Tel: +44 2380 295481

www.biconcomponents.co.uk

**Prysmian
 Draka
 General Cable**