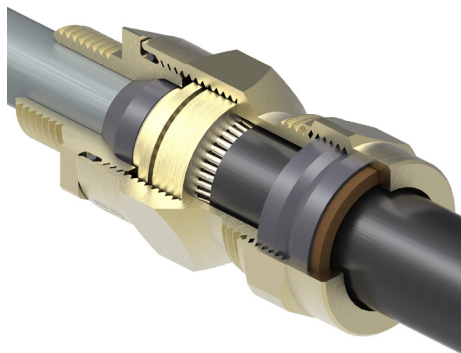


# E1W-XL Ex d IIC / Ex e II

## 474SW Series



**The E1W-XL is a universal hazardous area cable gland which includes superior dual seals to achieve IP67 protection.**

### Features and benefits:

- Brass indoor and outdoor cable gland for use in hazardous areas
- Suitable for circular, galvanised steel wire armour cables with extruded polymeric bedding and oversheath
- Suitable for circular, Braid wire armour cables with extruded polymeric bedding and oversheath
- Achieves IP67 seal onto cable and to enclosure with suitable sealing washer or thread sealant
- Three part armour lock provides mechanical cable retention and electrical continuity
- Continuity Connection for Lead Inner sheathed cables
- Inner PCP seal grips cable bedding and provides additional ingress protection
- Suitable for most climatic conditions - weatherproof and waterproof
- Standard and Nickel plated versions available
- Full Installation Instructions supplied

## Technical Information:

Certified II 2GD, Ex e II & Ex d IIC under ATEX directive 94/9/EC

Atex Compliance Standards: EN 60079-0, EN 60079-1,

EN 60079-7, EN 61241-0, EN 61241-1

Certificate number Sira 02ATEX3093X

IECEX Compliance Standards: IEC 60079-0, IEC 60079-1,

IEC 60079-7, IEC 61241-0, IEC 61241-1

Certificate number IECEX SIR 10.0070X

Service temperature range -60°C to +90°C

### May be used in:

- Zones 0, 1 & 2 with Ex ia IIA, B & C equipment
- Zones 1 & 2 with Ex ib IIA, B & C equipment
- Zones 1 & 2 with Ex e II equipment
- Zones 2 with Ex nA II equipment
- Zone 21 & 22 with Ex tD A21

### Where the cable is effectively filled, may Also be used in:

- Zones 1 & 2 with Ex d IIC equipment not containing a source of ignition & with a volume less than 2000cm<sup>3</sup>
- Zones 1 & 2 with Ex d IIA & Ex d IIB equipment not containing a source of ignition & with any volume
- Zone 1 with Ex d IIA & Ex d IIB equipment containing a source of ignition & with a volume less than 2000cm<sup>3</sup>
- Zone 2 with Ex d IIA & Ex d IIB equipment containing a source of ignition & with any volume
- Zone 2 with Ex nR II equipment

## Specifications

Gland Kit Reference		Cable Dimensions mm							Gland Dimensions mm						
Design Reference		Size	Under Armour		Overall Ø (B)		Armour Wire ø	Braid Armour Wire ø	Lead Sheath Ø		Entry Thread (D)	Thread Length (E)	Protrusion Length (F)	Hexagon	
Standard	Nickel Plated		Min	Max	Min	Max			Min	Max				A/F (G)	A/C (H)
474SW-71	474SW-71V	20SS	3.8	8.7	8.0	13.2	0.9	0.2/0.3	3.0	8.0	M20 × 1.5	15	41	23.4	26.7
474SW-52	474SW-52V	20S	8.0	11.8	8.0	15.8	0.9/1.25	0.2/0.3	4.0	12.0	M20 × 1.5	15	43	25.7	29.2
474SW-53	474SW-53V	20	11.8	14.2	11.7	20.8	0.9/1.25	0.2/0.3	7.0	14.0	M20 × 1.5	15	43	30.5	34.0
474SW-55	474SW-55V	25	14.0	20.1	17.0	27.2	1.25/1.6	0.3/0.45	10.0	20.0	M25 × 1.5	15	48	37.6	42.2
474SW-56	474SW-56V	32	19.7	26.6	23.5	33.5	1.6/2.0	0.3/0.45	15.0	26.0	M32 × 1.5	15	53	47.2	53.6
474SW-57	474SW-57V	40	26.6	32.4	29.0	39.9	1.6/2.0	0.3/0.45	20.0	32.0	M40 × 1.5	15	56	56.4	61.5
474SW-58	474SW-58V	50S	32.4	38.4	38.0	46.2	2.0/2.5	0.3/0.45	24.0	38.0	M50 × 1.5	15	61	60.0	66.0
474SW-59	474SW-59V	50	38.4	44.3	39.5	52.6	2.0/2.5	0.3/0.45	29.0	44.0	M50 × 1.5	15	61	70.1	77.2
474SW-60	474SW-60V	63S	44.3	50.3	50.0	58.9	2.5	0.3/0.45	34.0	50.0	M63 × 1.5	15	64	75.0	83.0
474SW-61	474SW-61V	63	50.3	56.2	51.3	65.3	2.5	0.3/0.45	42.0	56.0	M63 × 1.5	15	64	80.0	87.4
474SW-62	474SW-62V	75S	56.2	62.2	62.0	71.6	2.5	0.3/0.45	49.0	62.0	M75 × 1.5	15	73	90.2	99.1
474SW-63	474SW-63V	75	62.2	68.1	62.5	78.0	2.5	0.3/0.45	55.0	68.0	M75 × 1.5	15	73	98.8	109.2
474SW-64	474SW-64V	85	68.0	74.0	68.0	88	2.5	0.3/0.45	63.0	72.0	M85 × 2	20	102	115.1	126.0

