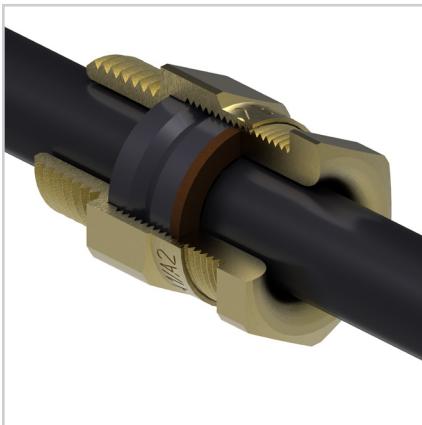


A1/A2 LSOH Gland Kit

423LSF Series



The best industrial brass gland for LSOH unarmoured cables along with LUL approval.

Features and benefits:

- Indoor & outdoor type for LSOH unarmoured cable.
- Brass Indoor & outdoor gland and accessories
- For circular, unarmoured plastic or rubber LSOH sheathed cables
- LSOH Seal & Shroud
- Suitable for most climatic conditions, weatherproof and waterproof

Kit comprises

A1/A2 (LSOH) Gland
Brass Locknut
LSOH Shroud
(2 per kit up to and including 25mm size)

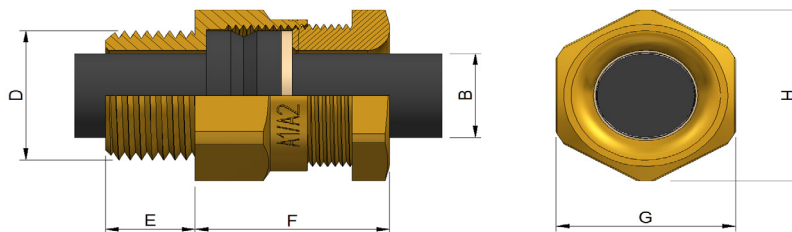


Technical Information:

- Suitable for use with all LSOH un-armoured cables
- CuZn39Pb3 brass alloy used for guaranteed strength and performance
- Complies with BS EN 50262 & BS 6121-1: 1989
- Gland rated to IP66 with use of suitable sealing washer or thread sealant at gland interface
- Service temperature range -20°C to + 90°C
- Complies with LU Standard 1-085 for installation in all sub surface locations
- LUL APR Product ID 1971
- Nickel Plated and standard versions available

Specifications

Gland Kit Reference		Cable Dimensions mm				Gland Dimensions mm				
Design Reference		Size	Qty per Kit	Cable Diameter ϕ (B) mm		Entry Thread (D)	Thread Length (E)	Protrusion Length (F)	Hexagon	
Standard	Nickel Plated			Min	Max				A/F (G)	A/C (H)
423LSF-71	423LSF-71V	20ss	2	3.5	8.5	M20x1.5	10	20	22	24.9
423LSF-52	423LSF-52V	20s	2	8.0	11.5	M20x1.5	10	22	22	24.9
423LSF-53	423LSF-53V	20	2	11.0	13.5	M20x1.5	10	22	24	27
423LSF-55	423LSF-55V	25	2	13.0	19.5	M25x1.5	10	25	30.5	34
423LSF-56	423LSF-56V	32	1	19.0	25.5	M32x1.5	10	25	42.4	48
423LSF-57	423LSF-57V	40	1	25.0	32.0	M40x1.5	15	33	47.2	53.6
423LSF-58	423LSF-58V	50s	1	31.5	37.0	M50x1.5	15	30	55	60
423LSF-59	423LSF-59V	50	1	36.5	43.0	M50x1.5	15	30	56.4	61.5
423LSF-60	423LSF-60V	63s	1	42.5	50.0	M63x1.5	15	34	70.1	77.2
423LSF-61	423LSF-61V	63	1	49.5	55.0	M63x1.5	15	32	75	83
423LSF-62	423LSF-62V	75s	1	54.5	61.0	M75x1.5	15	32	80	87.4
423LSF-63	423LSF-63V	75	1	60.5	67.0	M75x1.5	15	40	85	95



Prysmian Cables & Systems Limited,
Oak Road, Wrexham Industrial Estate, Wrexham, LL13 9PH, UK

Commercial Enquiries,
Sales Office Tel: 0845 767 8345,
International Sales Office Tel: +44 2380 295481

www.biconcomponents.co.uk