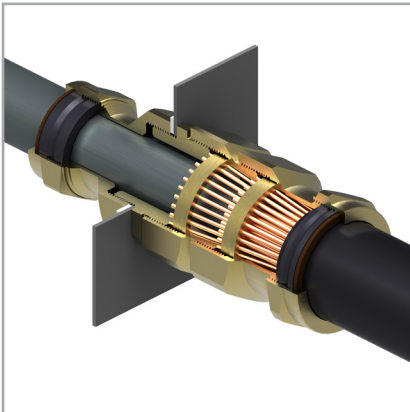


CW-Dual Screen Gland Kit

422DA Series



The CW Dual screen is a specialised cable gland for the termination of dual layered screen cables.

Features and benefits:

- Concentric Bonding Cable gland
- Brass Gland and accessories
- For Dual layer copper wire screened concentric bonding cables
- Suitable for most climatic conditions, weatherproof and waterproof
- Tandomized armour ring & body arrangement for compact termination of 2 layers of Copper screen wires
- Secondary seal & shroud for topside of the steel structure

Kit comprises

Dual Screen CW Gland
Nylon Sealing Washer
Top seal assembly
LSOH Shroud for Top Seal assembly

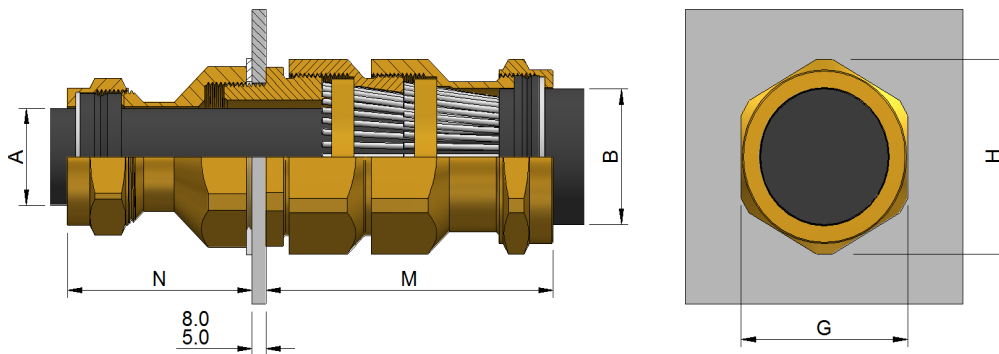


Technical Information:

- Suitable for use with all Concentric dual layer copper wire screened bonding cables
- Gland rated to IP66 with use of suitable sealing washer or thread sealant at gland interface
- Service temperature range -20°C to + 90°C

Specifications:

Gland Kit Reference			Cable Dimensions mm					Gland Dimensions mm				
Design Reference	Size	Qty per Kit	Conductor Insulation Ø (A)		Overall Ø (B)		Screen Wire Ø	Entry Thread (D)	Thread Length (E)	Protrusion Length (F)	Hexagon	
			Min	Max	Min	Max					A/F (G)	A/C (H)
422DA-90	40	1	17.0	27.2	29.0	39.9	0.9/1.3	M40x1.5	15	92	56.4	61.5
422DA-91	50ss	1	23.5	33.5	38.0	46.2	1.85/2.2	M50x1.5	15	100	60	66
422DA-92	50s	1	23.5	33.5	39.5	52.6	1.6/2.1	M50x1.5	15	110	70.1	77.2
422DA-93	50	1	29.0	39.9	39.5	52.6	1.6/2.1	M50x1.5	15	110	70.1	77.2
422DA-95	63	1	39.5	52.6	51.3	65.3	2.2	M63x1.5	15	114	80	87.4
422DA-96	75	1	39.6	52.6	62.5	78.0	2.6	M75x1.5	15	126	98.8	109.2



Prysmian Cables & Systems Limited,
Oak Road, Wrexham Industrial Estate, Wrexham, LL13 9PH, UK

Commercial Enquiries,
Sales Office Tel: 0845 767 8345,
International Sales Office Tel: +44 2380 295481

www.biconcomponents.co.uk